



Korea Particle Technology

www.starpheres.com

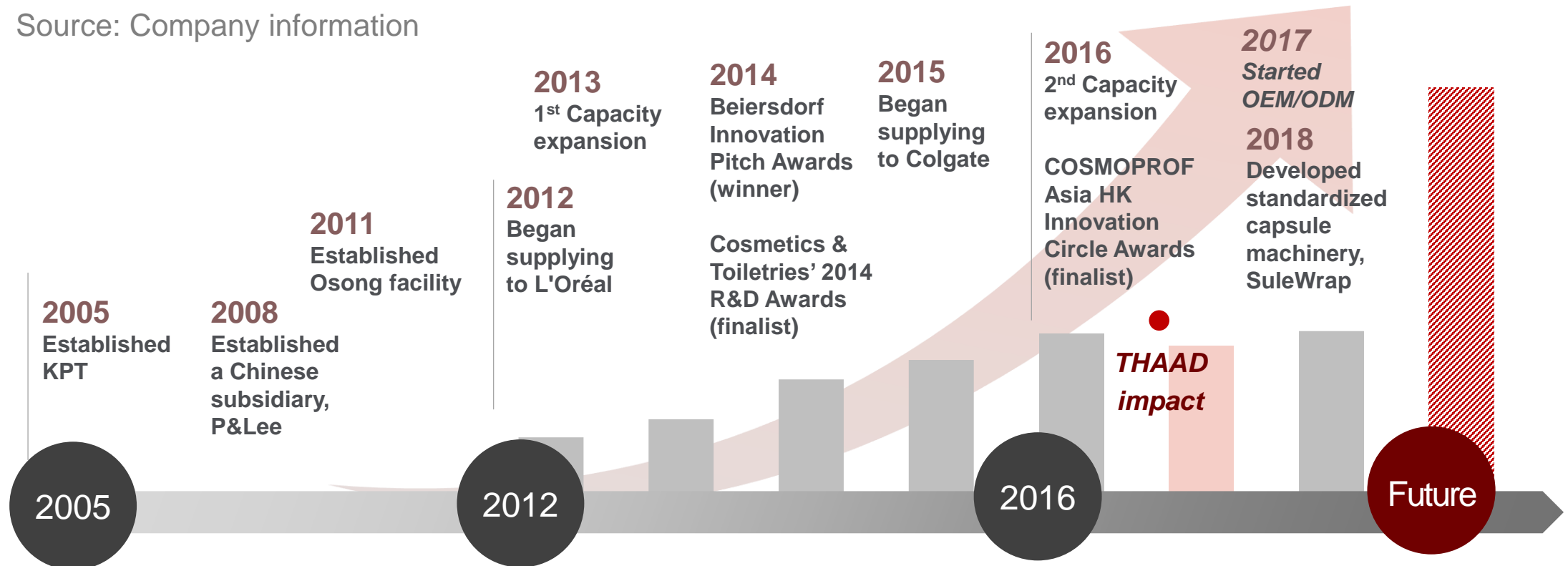


Corporate History

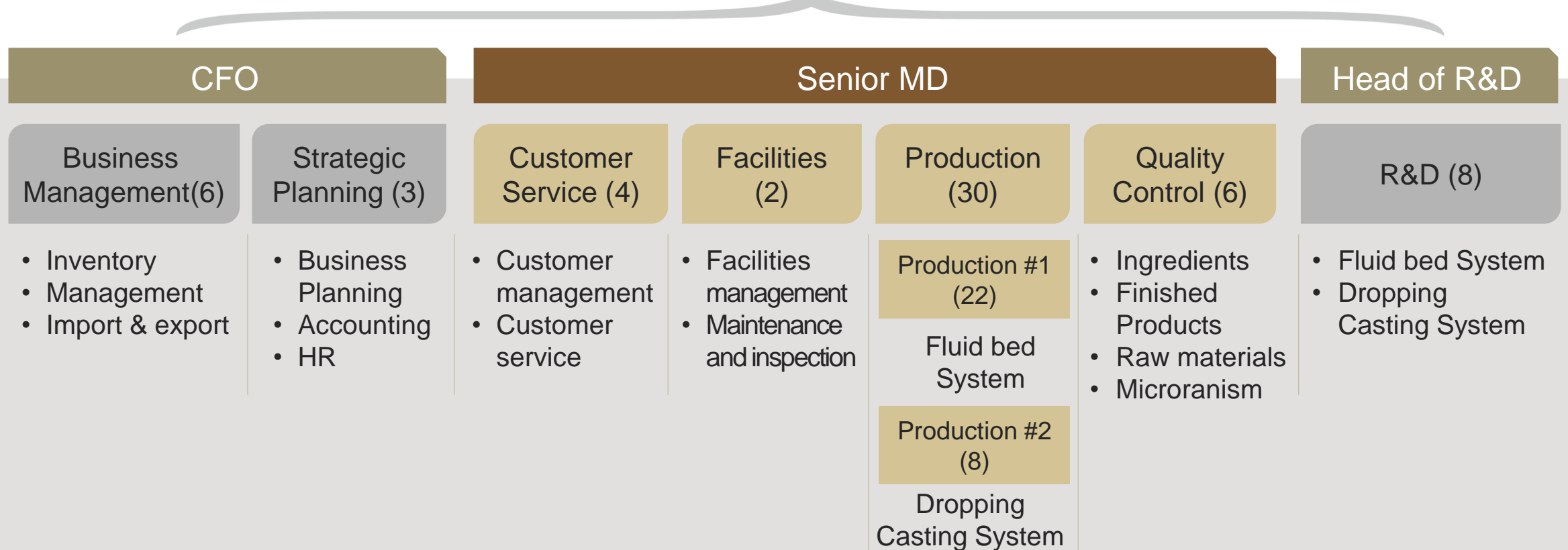
Track record of organic growth for almost 15 years, driven by strong commitment to R&D and technologies, and well-established relationship with domestic customers

Corporate History & Revenue Trend

Source: Company information



Organization Structure



Organization Structure

Products

R&D

Reference

Visual Carry System

Starphere is our own name for visual carry system based on cellulose, Corn starch and Mannitol originated from plant. Give intention what cosmetics deliver to skin.

Stabilization of Actives

Sensitive actives can be captured into starphere to protect it from any damage outside. Make higher stability and adjust dissolving speed.

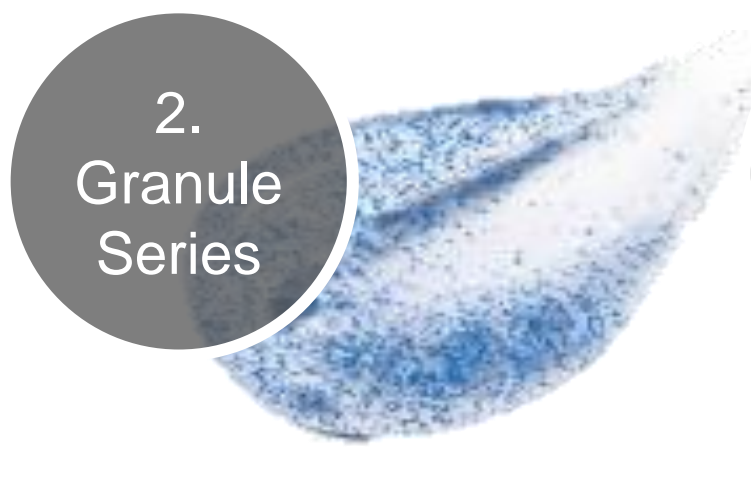
Multi –Lamella Structure

Multi- layering can be the same composition or different composition. that means we can hide color or active or any concept ingredients. Contact us for your own customizing product as unique one.

1. Pearl Series



2. Granule Series



3. Toothpaste Series





1

*Starphere
CC
Series*



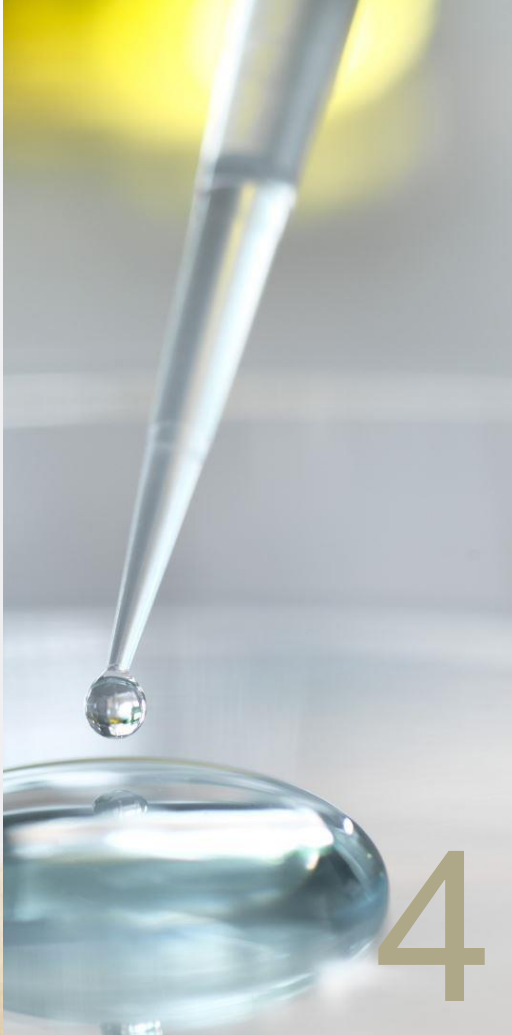
2

*Charcoal
Series*



3

*Powder
Cleanser
Series*



4

*Derma
Series*



5

*Emulsion
Pearl Series*

Starphere CC Series

Products

R&D

Reference

Make your own color shade
With Starphere CC series



The best way to embody various shade and colors with limited ingredients. Just adjust how much sphere put in formulation!

Product name :
Starphere CC30-BW0105-02



Hard and dry dual colored spherical pellets, which become soft in time in water-based system.

Foundation Capsules
Starphere CC70-BR804



Foundation Capsule including 70% of foundation pigments can be used clear water gel and moisturizing care.

Starphere CC Series

Products

R&D

Reference



Nude Magique
BB



Pink Glow
CC



Lucent
Magique BB



Pure Mineral
BB, CC



BB Moisturizing
Gel

Brand	L'Oréal	Maybelline	L'Oréal	Maybelline	L'Oréal
Description	BB Cream with pigments that adjust skin tone to a moisturized, nude complexion	CC cream without any heavy pigments that give skin a translucent pinkish glow	Cream intuitive BB capsules that magically transform skin for an enlivened lit-from-within complexion	Instantly evens pores and increases translucency, with natural oils for nourishment	BB cream for men; clear light blue gel transforms into skin color to even skin tone and give a matte finish
Image					
Customer sentiments	"When it's rubbed on the skin... It creates the glow of nude-looking skin. It evens out my skin tone well. It's my skin, but better."	"It has got Vitamin C. White Peony and Lotus to brighten and hydrate the skin. The little pink gem capsules burst on contact to provide a pinkish, radiant glow."	"The product squeeze white with color adjust beads, to match skin tone."	"As you blend it will turn out to creamy face and it will transform on your skin ... without any hot or itchy. This is a good seasoning that I can recommend to any"	"I can see the transforming part from gel to cream and eventually even out their skin tone, which is quite interesting."

Charcoal Series



Bamboo
(Origin)



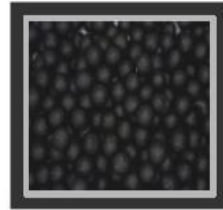
Coconut Shell
(Origin)

All Activated charcoal used! All of KPT charcoal line using activated charcoal powder. You can meet all from basic sphere to the most innovative ingredients can be suggested by KPT Co., Ltd.

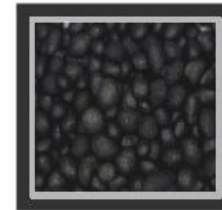
removing
skin
wastes

Control
bacteria

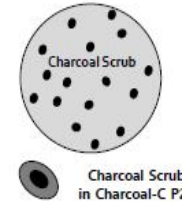
Helps
Clear
skin



Charcoal-C F23
(Regular shape)



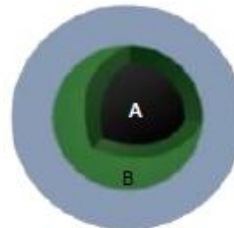
Charcoal-C P23
(Irregular shape)



Charcoal Scrub
in Charcoal-C P23

Charcoal color change (Starphere KG23CP30)

Starphere KG23CP30 is hard and dry dual colored spherical beads, which become soft in time in water based system. Usually high content of charcoal powder inside will be release after break bedas and it leave darker color than outside.



A : Activated Charcoal layer / B : Outer color

Products

R&D

Reference

INCI Name : Charcoal Powder

EWG Grade :



- ✓ Non-Animal Test
- ✓ GMO Free
- ✓ Non-nano material
- ✓ Animal Free
- ✓ BSE Free
- ✓ Food Grade
- ✓ Pesticide Free
- ✓ Natural Origin

Derma Series

✓ Original ceramide NP

Widely known as Ceramide 3, functional ingredient for cosmetic, has similar stereo-chemical structure with human skin.



✓ Granulated ceramide



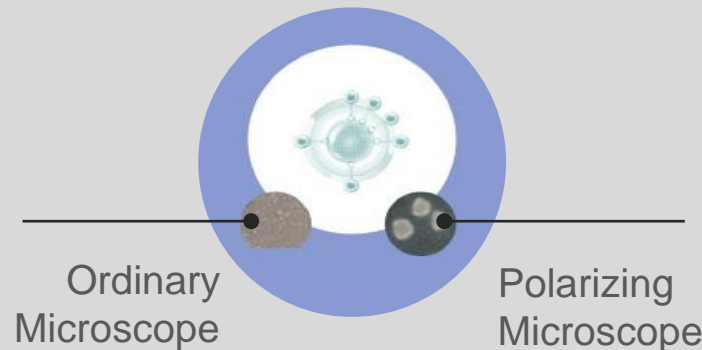
✓ Composition with EWG



Ceramide NP(Ceramide 3)
Mannitol
Zea Mays (Corn) Starch
Microcrystalline Cellulose



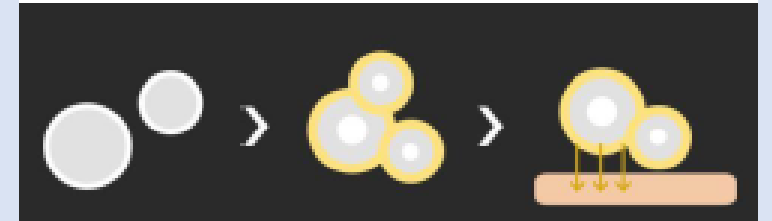
Hydrogenated
Lecithin



✓ Moisture C

Encapsulated ceramide, which constitutes the skin barrier effectively transmits and absorbs active ingredient.

✓ Moisture LC



Ceramide, Lecithin > Encapsulation > Keep skin moisturizing

Including 30% Ceramide
& 30% Lecithin

Skin
Moisture

Skin soft
/ Smooth

Skin
Barrier

Products

R&D

Reference


Powder Cleanser series

Products

R&D

Reference

- ✓ Supply some semi-manufactures.
- ✓ Powder Cleanser(for facial) is a kind of granules.
- ✓ Made by coated & mixed surfactants with Fluid Bed System.



**Sodium
Lauroyl
Glutamate**

**Sodium
Cocoyl
Glycinate**

**Sodium
Cocoyl
Isethionate**

“ Only NATURAL pH surfactant are used ”

Emulsion pearls series

Means O/W-emulsions transformed to
“ **Emulsion type beads** ”

A Kind of **INNOVATION** in cosmetic industry.
(Beads made by Emulsion are **NOT** exist)

They are soft, easy apply in W/O or
W/S system for esthetic with visual effects.



PATENTED TECHNOLOGY

Emulsion pearls series

Products

R&D

Reference

Emulsion pearl with beautiful pearlescent effect

“ONE BY ONE PICK-UP” New type of approach that cosmetics pioneers

KPT Emulsion Pearl, a spherical O/W cream, is a patented manufacturing method in Korea and the United States. It uses vegetable polymers to implement the formulation into a matrix structurally.!

Luxury

Gloss

Moisture



Emulsion pearls series

Products

R&D

Reference



“ **Capsule cream** with Refreshing Touch ”

It is characterized by low stickiness and refreshing, light touch. It is a 'capsule cream' that can control oil balance and moisture balance by adding a conceptual or functional ingredient.

Face
cream

Body
Cream

Variety Shape & Size for Emulsion Pearls

Products

R&D

Reference

- **Size** : 2.0-8.0mm
- **Shape** : Round & Oval



*Round & Oval
2.0 ~ 8.0mm*

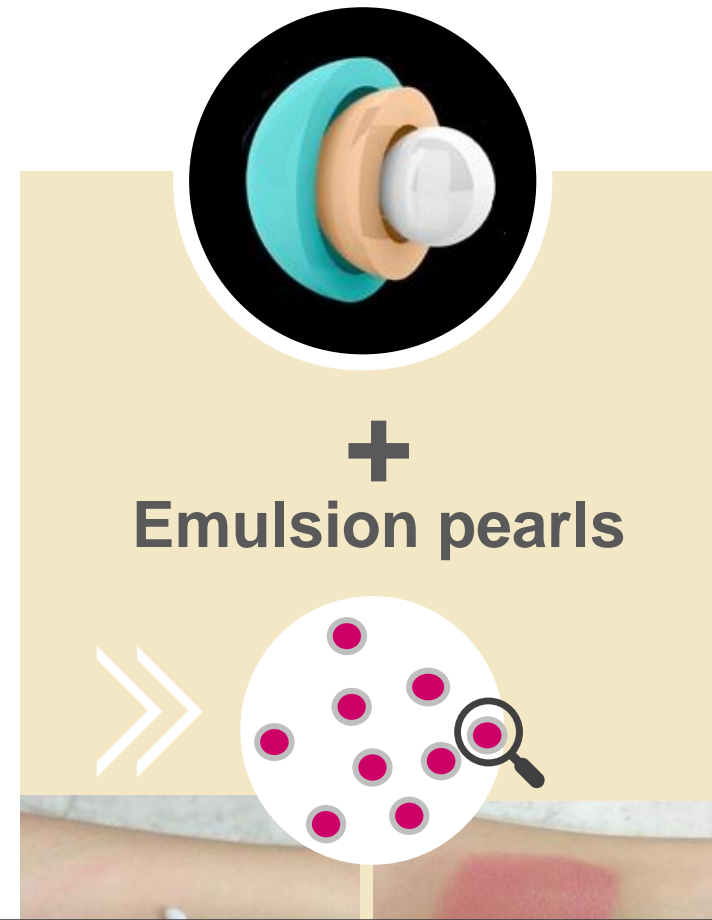
KPT's Technology

Products

R&D

Reference

Color change capsules are combined in emulsion pearls



KPT's Technology Emulsion Pearls Combination of KPT Two tech

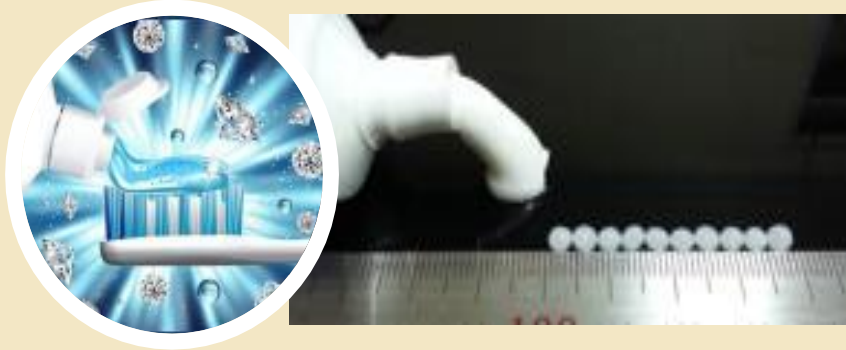
KPT's Technology _ Upgraded type of Emulsion pearls

Products

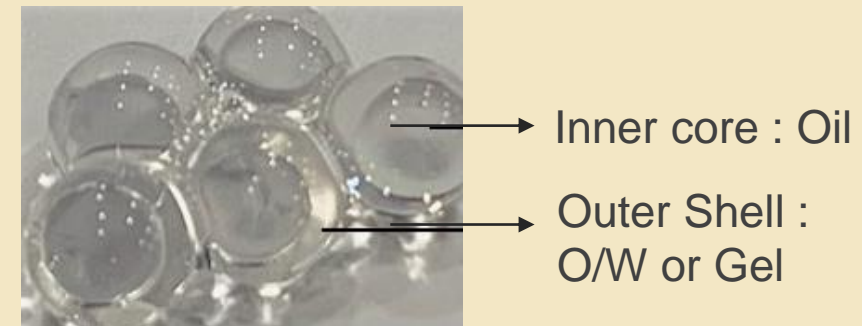
R&D

Reference

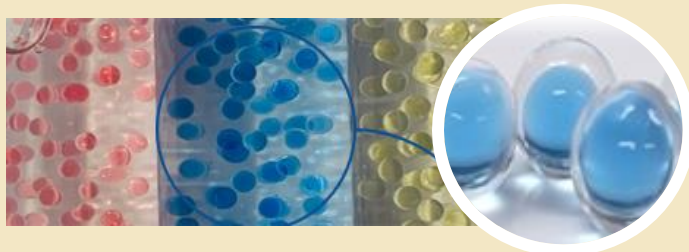
- Toothpastes also can be transformed



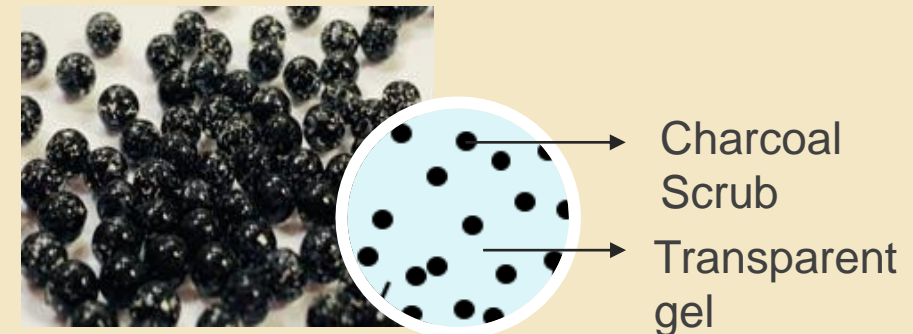
- Double Layer Pearls



- Double Layer Pearls -colored
 - ✓ Oil soluble colorant can be into DP
 - ✓ Original oil color can be visualized



- Scrub Bomb - Charcoal



KPT's Technology _ Upgraded type of Emulsion pearls

Products

R&D

Reference

KPT's Soft capsule

Active ingredient can be safely placed inside the capsule for protection.

▪ SP-RA5-PG7585ROY,

It contains 24K gilt and royal jelly
It creates healthy skin with anti-inflammatory and anti-aging effects.

Range of use

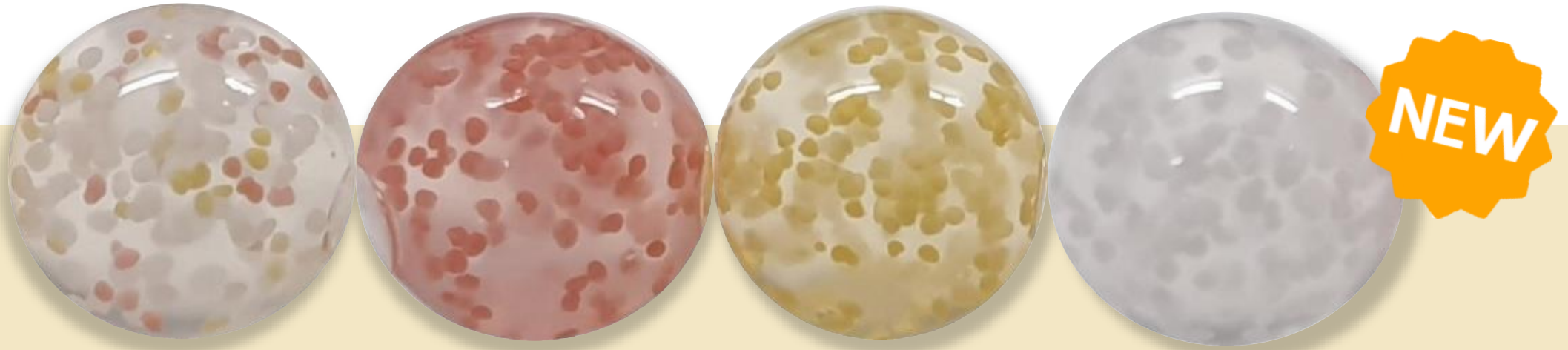
Cream,
Lotion,
Ampoule

Mask,
Sleeping
Pack

Body
Lotion
& Cream



Moisturizing Bomb – SP-CM series



Transparent body + coloured CERAMIDE spheres

Combination of Function and Visual Ceramide spheres captured
by SP (Soft pearls) SP protect ceramide sphere from damage

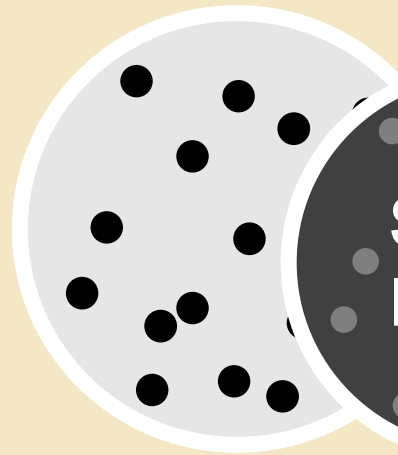
KPT's Technology _ Upgraded type of Emulsion pearls

Products

R&D

Reference

Scrub Bomb - Charcoal



Scrub
Bomb

Charcoal Scrub (75-210 μ m)

transparent gel

Visual carrier system with lots of
scrub beads in emulsion pearls



KPT's Customers

Products

R&D

Reference

AMORE PACIFIC
CORPORATION

L'ORÉAL

KT&G



LG Household & Health Care

PAYOT
PARIS

Johnson & Johnson

It'S SKIN

ENPRANI

KOSÉ

Colgate®

LION

kolmar
한국콜마

DOORI COSMETICS

PARAGON
TECHNOLOGY AND INNOVATION

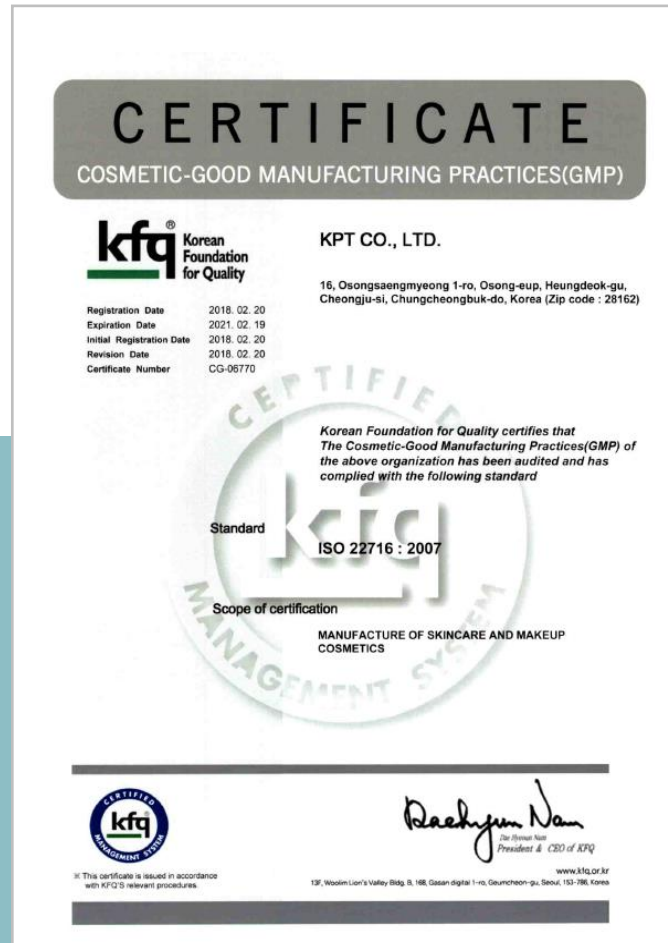
DARLIE

KPT's Customers

Products

R&D

Reference



Strategic location

Korea's first industrial complex solely dedicated for R&D manufacturing located by Korea's leading bio/cosmetic firms



Layout of manufacturing facility site (Factory #1)



Innovative Idea for new generation cosmetic

